

BIG RED BANTER

Stand Placement

It doesn't matter how hard you work all year long to prepare for hunting season or that you have the best Bear bow and Trophy Ridge accessories unless you can put yourself in the right spot. Preparation and quality equipment are incredibly important, but the last critical detail is getting that stand in the right spot. I've studied whitetail movement habits for many years and have spoken on the topic several times. Believe it or not, there is a reason for where deer move and how they get from place to place; they do not just wander aimlessly not knowing where they are going.

I love hunting rough terrain because I can more easily predict travel corridors based on the lay of the land. Finding these particular routes is actually

very easy with the use of a topo map. For those that have attended my seminars, I've heard very positive feedback from hunters that have been able to put themselves in the right spot at the right time and increase their encounters with big bucks by using a topo map to predict travel routes.

In using a topo map I look for "high opportunity locations" which are spots where many travel routes come together. I'm not talking about trails, you cannot go to these locations and always find a maze of trails coming together, but sometimes you can. Ever been sitting in a tree and see a buck come out of the middle of nowhere, not on a trail and wonder why he wasn't on the trail? Those are the spots I am talking

about, they are often used but no one trail becomes defined like it does in some places where deer walk the same path literally over and over and over wearing down vegetation to the dirt. Some travel corridors allow deer to walk on a path 20 yards wide, they don't all step in the same place and no trail develops, but it's used heavily for a certain period of the year depending on feeding patterns. (Cont. on Page 2)



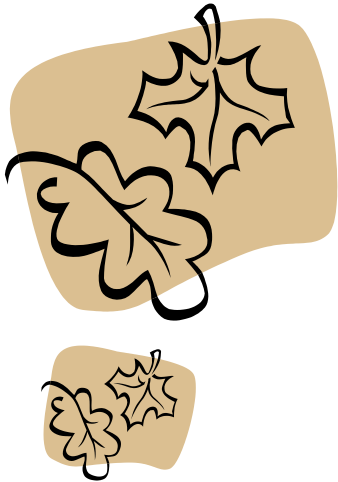
Check out DreamDirt.Tv. Loads of information about everything land.

Inside this issue:

Stand Placement (Cont)	2
The Heartland QDMA Banquet	2
Dream Chasers—The Beginning	3
HFCN Happenings	3
New Club Members	3
Member Photos	4

The Heartland QDMA Branch will have a meeting November 29th, 2011 at the VFW Post in Blair, NE (393 River Road). It will run from 7-9 PM. If you are a member, were a member, or are interested in learning more about us come on out! Please RSVP (bigredoutdoors@gpc.com.net) so that we can ensure we have adequate seating.





Stand Placement (Continued)

I start with an aerial photo with a topo overlay. My favorite is to get a large copy printed at the courthouse and then have it laminated so I can mark it up with dry erase markers but you can just as easily download the same thing online and use a Paint program to mark up a copy of it. Draw in your property boundaries and begin looking for the V shaped or U shaped signatures in the lines. When you see this you are seeing "the path of least resistance" Deer will always use the path of least resistance, remember their entire life revolves around surviving and survival of their species. Deer conserve energy and use it as efficiently as possible. Using the path of least resistance in their travels is a part of their survival and especially more important in times of food shortages.

When you have your topo start drawing lines to connect all of those V's and U's you see, just mark away and soon you'll begin to notice that some locations offer a much higher opportunity along travel routes than others do, and while some spots may have one good trail you really like the other locations will offer you a parade of deer where you had never considered sitting before.

Start to pay attention to what or where these trails connect. Does your high opportunity location lay between bedding and food or inside a bedding area? Does the location lay just onto the neighbor's property or so close to the neighbor's property that it's difficult to hunt.

Now all of these lines you find on topo maps create certain features. Two of the most effective terrain features you'll find for slaying a big buck are convergence points and saddles. A convergence point can be seen in the accompanying photos. Convergence points often look like an O or an odd shaped O but generally are circular for the most part, they are often hill tops and present a high opportunity location in rough terrain because many of the secondary terrain features lead to them. The smaller the convergence point, the easier it is to hunt.



The other and potentially the most effective for bowhunters is a saddle or what often looks like an H or an X on a topo map. A saddle offers deer the opportunity to cross a high ridgeline at a low point. Finding these saddles on a topo map is like finding gold! They are most effective when they are the connecting point or lay between two desirable locations. In the Loess Hills where I live they are often between two crop fields so deer will travel back and

forth from field to field and must move through this small area. During the rut it usually means a parade of bucks all day long at this spot as they work to travel as much ground as possible checking does.

Finally, what if you are out in the woods ready to set up with no topo data with you? Well if you can't get it on your smart phone using a program like Google maps then use your own eyes. It turns out humans are not much different than deer either; we don't like to expend more energy than we need to. You'll notice when you walk up a hill or down a hill your eyes will lead you to the path of least resistance, look for pinch points along the rough or look for yourself to be in a spot where you have multiple options of where you can turn without a steep climb and you have found a great spot to hang a stand. Good luck out there this year and I wish you all the best in your big buck quest.

Article by Jason Smith
Land Specialist & Auctioneer
[DreamDirt TV](http://DreamDirtTV.com)
Whitetail Properties

"Deer will always use the path of least resistance, remember their entire life revolves around surviving and survival of their species."



FOODBANK
FOR THE HEARTLAND



The Heartland QDMA Banquet

Your local branch of The Quality Deer Management association is working hard to plan an unforgettable Club Banquet. This is an event you won't want to miss!

The Banquet will be held on March 10th, 2012 in Papillion, Nebraska at Liberty Social Hall. Put it on your calendar now and plan to have fun! We will have a social hour, silent auction, live auction, meal, plenty of raffle drawings and door prizes to keep you entertained throughout the night. Liberty Social Hall features a

full bar and we will have some vendors there to showcase their products.

The night will conclude with the ultimate raffle drawing as we will be drawing the winner of a HuntVe 4x4 Electric Game Changer. Tickets will go on sale November 1st and we will only sell 1000 tickets per vehicle raffled. Each ticket is \$20 so don't miss your chance at a 1 in 1000 chance of winning a \$15k plus unit!

Banquet ticket sales will begin in January and can be purchased for

\$40 (single) and \$55 (couple). The Branch will also be selling 5 corporate tables at a price yet to be determined. Still need to vote on what gift will be placed with these tables.

Contact me for more information or to purchase your tickets.



Dream Chasers—The Beginning

This story begins with a guy by the name of Cody Butler. Even at a young age Cody had a dream to someday prove to America that no matter who you are or where you're from dreams can come true. The first plan was to somehow do this in the golf industry. However as Cody got older he realized that this plan was not the one that God had planned. He then turned to the passion that had been within him since day one, the outdoors, and a new dream had begun.

After filming for Archer's Choice Media for a few years in high school Cody realized that outdoor television was where he needed to be and so the quest began to find three indi-

viduals of the same age and had the same passion to join him. A couple years went by and finally three guys were found. Alex Gyllstrom, Nick Skinner, and Cody Skinner could not have fit the role more perfectly.

The next mission was to sit down and come up with a plan to produce one of the highest quality shows in the industry. It was not going to be easy but they knew with hard work it could be done. The first attempt at an internet show failed with the name of the show falling out because of a trade mark complication. Because of this the team set down again and came up with a concept that drove all of them and Dream Chasers was born.

Dream Chasers will not only show the American people that dreams can come true, but it will show them the hard work these guys have to endure to make things happen. To these guys hunting is not about the kill, it's about the story. It's about introducing new people to the outdoors and passing on a tradition and culture that has been alive in the human race for thousands of years. So what do you say? Are you ready to join the boys? Are you ready to become... A Dream Chaser.

Courtesy of Cody Butler

Dream Chasers

HFCN Happenings

With bow season well on its way, duck season opening up in most states soon and rifle deer season around the corner, the HFCN wishes all of our members the best of luck this year!

We have experienced some difficult weather conditions this year ranging from tornadoes to major droughts but the club owners have done an excellent job of keeping their clubs running smoothly and getting past the difficult times. We saw major growth in the HFCN in the month of September and it looks like we will have another awesome month for October in memberships and land acquisition.

HFCN knows that all of our club land will meet your expectations and are

looking forward to seeing your success pictures in the very near future. HFCN clubs take pride in providing good solid quality properties and remain dedicated to its philosophy, 'quality over quantity'. This philosophy is what separates the HFCN from any other organization out there and will remain our building block way into the future of providing properties across the country.

As usual, we are continuing our efforts in adding new clubs throughout the USA and are focusing on states that we do not have land in currently. Our other focus right now is to upgrade the online reservation system for you the member and our club owners. We remain dedicated in providing the best of the best so

whether you are hunting, fishing or simply wanting to book a camping trip, we want to make that as easy as 1 2 3!

Big Red Outdoors won our membership drive for the month of September 2011 and remains one of our top land and member producers in the HFCN, so we would like to congratulate Chris Edwards and Big Red Outdoors. Without efforts like this, there is no HFCN so congrats Chris and continue your hard work at providing your members the best there is in the Hunting Industry.

Happy Hunting and Please be safe!

Article by Mark Corwin
President—Hunt Fish Camp Network

New Club Members

Big Red Outdoors would like to welcome our newest club members! We are slowly growing and look forward to providing you and your families with quality private land for years to come.

New members in the month of September:

Michael, Blake, Brett and Mitchell Moritz grew up in

northeast Nebraska. Life has taken them different routes but they always like to get back to visit home and hunt during the November Rifle Season.

Paul Melnarik lives in Omaha and is Director of Franchise Standards for Complete Nutrition, Inc. He will be hunting with his children Curtis and Jessica.

Stefanos Johannesmeyer lives in Omaha and works at Gavilon as a Trade Assistant. He is looking forward to some great Archery Hunting.

I would like to Thank You for giving us the opportunity to serve you and your families.

Partners



www.dreamchasersstv.com



www.furrowoutdoors.com

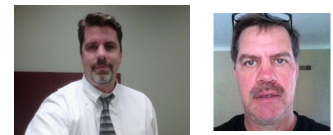


myadventureaid.com



Our National Network of
Hunting Clubs.

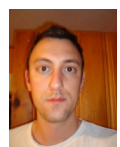
"Our ultimate goal is to
provide you, the member,
an opportunity to hunt any
game and in any state."



Michael, Blake & Brett Moritz



Paul Melnarik



Stefanos



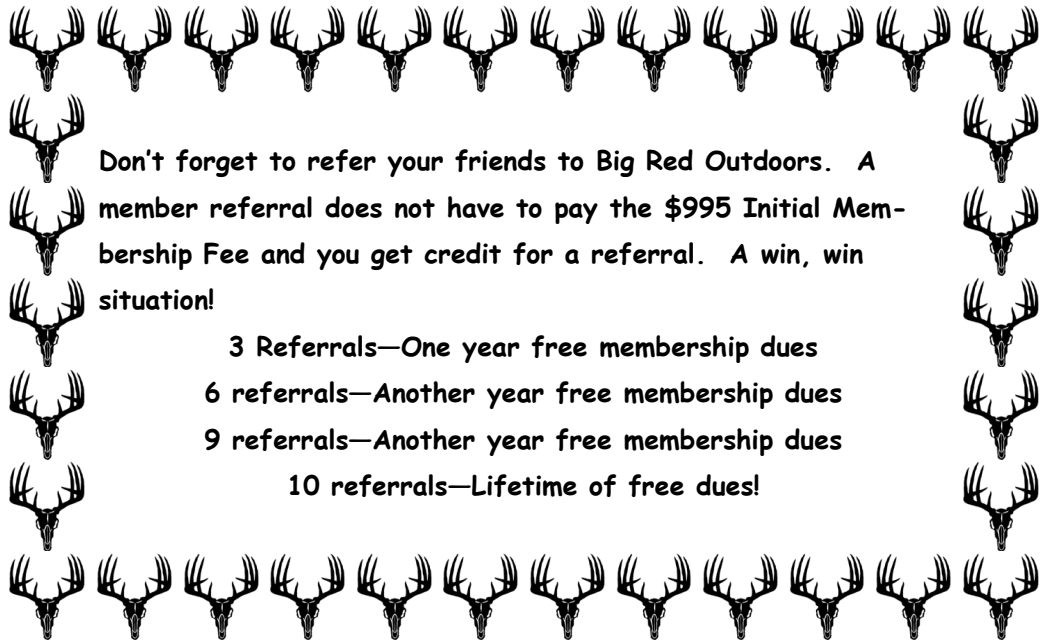
BIG RED OUTDOORS LLC

PO Box 203
Dodge, NE 68633

Phone: 1-877-738-4915
Fax: 1-402-693-4915
E-mail: chris@bigredoutdoors.com

**Giving Nebraska outdoorsman
access to private land**

Bigredoutdoors.com



Don't forget to refer your friends to Big Red Outdoors. A member referral does not have to pay the \$995 Initial Membership Fee and you get credit for a referral. A win, win situation!

- 3 Referrals—One year free membership dues
- 6 referrals—Another year free membership dues
- 9 referrals—Another year free membership dues
- 10 referrals—Lifetime of free dues!

Welcome to Big Red Outdoors, Nebraska's Premier Sportsmen's Club! My wife and I started this club to provide access to quality private land for hunting, fishing, and camping opportunities that would otherwise be unavailable. I'm a lifelong outdoor sportsman, and I long ago realized that the best hunting and fishing is found on private land. With that in mind, I set out to start a club that could provide access to private ground at an affordable price. We now lease over 8,000 acres across Nebraska and will continue to add new properties as membership grows. Come be a part of the Big Red Outdoors Family!

Member Photos

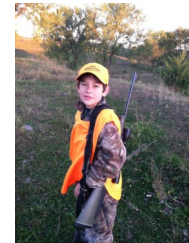
Send us your photos so we can share them with the rest of the club!



Anderson Graham after a successful dove hunt! Congrats!



Shorty Christiansen with the first buck harvest on BRO property in 2011!



Nolan Riley after a doe in the October Antlerless Season. Good Luck!



Hayden Riley, first time with a shotgun/first dove. Congrats!



Anderson Graham with his first ever deer harvest. Congrats!



Jonathan Thow on two successful dove hunts. Great job!



Chrisy Christiansen with her deer harvest on BRO property in 2011!

follow us on
twitter

www.twitter.com/#!/bigredoutdoors

f Find us on
Facebook

www.facebook.com/bigredoutdoors